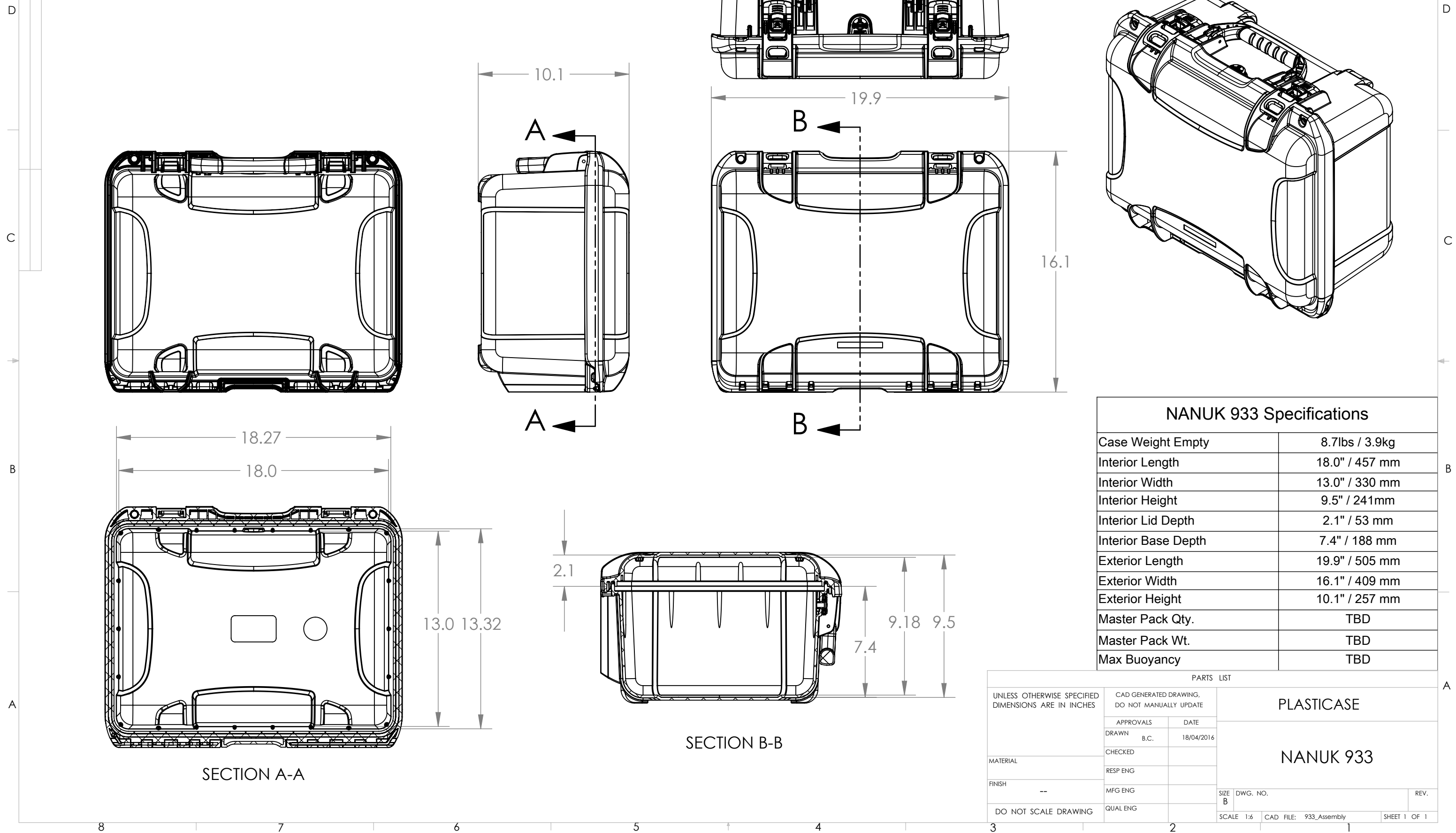


THE INFORMATION CONTAINED IN THIS DRAWING IS THE SOLE PROPERTY OF PLASTICASE ANY REPRODUCTION IN PART OR WHOLE WITHOUT THE WRITTEN PERMISSION OF PLASTICASE IS PROHIBITED.



| REVISIONS | | | |
|-----------|-------------|------|----------|
| REV. | DESCRIPTION | DATE | APPROVED |
| | | | |
| | | | |



| NANUK 933 Specifications | |
|--------------------------|----------------|
| Case Weight Empty | 8.7lbs / 3.9kg |
| Interior Length | 18.0" / 457 mm |
| Interior Width | 13.0" / 330 mm |
| Interior Height | 9.5" / 241mm |
| Interior Lid Depth | 2.1" / 53 mm |
| Interior Base Depth | 7.4" / 188 mm |
| Exterior Length | 19.9" / 505 mm |
| Exterior Width | 16.1" / 409 mm |
| Exterior Height | 10.1" / 257 mm |
| Master Pack Qty. | TBD |
| Master Pack Wt. | TBD |
| Max Buoyancy | TBD |

| PARTS LIST | | | |
|---|------|---|--------------|
| UNLESS OTHERWISE SPECIFIED DIMENSIONS ARE IN INCHES | | CAD GENERATED DRAWING, DO NOT MANUALLY UPDATE | |
| APPROVALS | | DATE | |
| DRAWN | B.C. | 18/04/2016 | |
| CHECKED | | | |
| RESP ENG | | | |
| MFG ENG | | | |
| QUAL ENG | | | |
| DO NOT SCALE DRAWING | | SIZE B | DWG. NO. |
| | | SCALE 1:6 | REV. |
| | | CAD FILE: 933_Assembly | SHEET 1 OF 1 |

PLASTICASE
NANUK 933