

**APEX
VISION**

Thermal

**Easy, Efficient,
Extraordinary**

EasIR Series Tool-like Thermal camera

Introduction

EasIR Series tool-like thermal camera provides two configuration options of 120x90 and 256x192 IR detectors. It adopts the new real-time IR-Perfclear technology to enhance the details and reduce noise of the image and present a clearer image in real time. Equipped with a series of professional functions such as 2MP visible light camera, video streaming and recording, WIFI, and OTA upgrade, etc., EasIR Series brings a clearer, more powerful and smoother work experience for users.

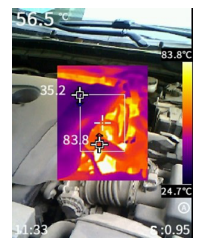
Features

- Next-gen infrared imaging system APEXVISION for ultra-clarity & precision
- High-sensitive infrared detector, resolution 120x90/256x192
- Real-time IR-Perfclear technology, 4 times better image quality
- -20°C~550°C wide temperature measurement range, automatic switch
- Photo and video recording, convenient sharing via mobile APP
- Video streaming, real-time data transmission with PC analysis software
- OTA firmware upgrade to keep the device up-to-date

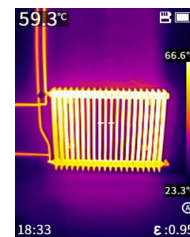
Applications



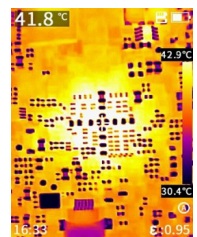
Electrical Application



Facilities maintenance



HVAC Inspection



PCBA detection

Specifications

| Product model | E1S | E1+S | E2S |
|---------------------------------|---|--|---|
| Imaging and optics | | | |
| Core Technology Item | Equipped with full ApexVision S1 system architecture: Detector ApexCore S1 + Platform Nexus 1.0 + Algorithm SharpIR 2.0 | | |
| Detector type | VOx, 7.5 to 14μm | | |
| Infrared resolution | 120×90@12μm | 256×192@12μm | |
| Super resolution | Support real-time super-resolution reconstruction, Upgrade to 240×180 | | Support real-time super-resolution reconstruction, Upgrade to 512×384 |
| NETD | 15mK | | |
| Frame rate | 25Hz/9Hz | | |
| Focal length | 1.6mm | 3.2mm | |
| Field of view | 50°×38° | 56°×42° | |
| IFOV | 7.27mrad | 3.82mrad | |
| Min. object distance | 0.1m | | |
| D:S | 138:1 | 262:1 | |
| Focusing mode | Focus-free | | |
| Measurement and analysis | | | |
| Measurement range | Support auto-switching: -20°C to 150°C, 0°C to 550°C | | |
| Measurement accuracy | ±2°C or ±2%, whichever is greater | | |
| Analyzed target | Center spot; Three Fixed Areas: Small, Medium, Large (Alternative) | | |
| Alarm | Full screen temperature threshold alarm (Image and Flash) | | |
| Image display | | | |
| Display screen | 2.4" LCD | | |
| Image mode | IR, VIS, MIF, PIP | | |
| Color palettes | 6: Iron Red, White Hot, Arctic, Rainbow 2, Hot Iron, Rainbow 1 | | |
| Image adjustment | Level span mode: Automatic, Semi-automatic, Manual | | |
| Digital camera | 2MP | | |
| Functions | | | |
| Laser | Laser Indication | | |
| Recording function | Photo and Video | | |
| Storage and transmission | | | |
| Storage media | Built-in (16 GB) | | |
| Image storage | JPG with temp info | | |
| Video storage | Video storage format in Irgd (with temp info) | Supports real-time video streaming, video storage format in Irgd (with temp info) | |
| External interface | USB-C, Tripod socket | | |
| Wi-Fi | / | Yes, it can be connected to the mobile terminal for image and real-time video transmission | |
| Power system | | | |
| Battery type | Rechargeable lithium-ion battery, non-removable | | |
| Operating time | 8 hours | 11 hours | |
| Environmental parameters | | | |
| Working temperature | -15°C to 50°C | | |
| IP rating | IP54 | | |
| Drop | 2m drop test | | |
| Physical parameters | | | |
| Hardware | Illuminator | | Wi-Fi, Illuminator |
| Weight | 355g | | 375g |
| Size | 194×61.5×76mm | | |
| Software kit | PC: ThermoTools | PC: ThermoTools; Mobile: FocusIR (iOS/Android) | |
| Standard | A device, Wrist strap, Power adapter, Adapter plug, USB-A to USB-C cable, Quick Start Guide, Warranty card | | |
| Options | Tripod | | |