

# PT II SERIES

## HD High-Performance Thermal Camera

PT II series Flagship Edition Megapixel Thermal Imager of Guide Sensmart incorporates a new generation of self-developed uncooled infrared focal plane detector, achieving a resolution of up to 1280×1024. Its exclusive A/M-Focus manual/automatic hybrid focusing system delivers superior image quality and enhanced operational flexibility. The PT Series has undergone comprehensive upgrades in hardware configuration, software systems, and user experience, aiming to establish a new industry benchmark.



### 1-lens TwinView DFOV

IR single-lens dual-field design:  
1s wide/narrow switch, no lens change for long-range inspection and close-range measurement, efficient for complex scenarios.



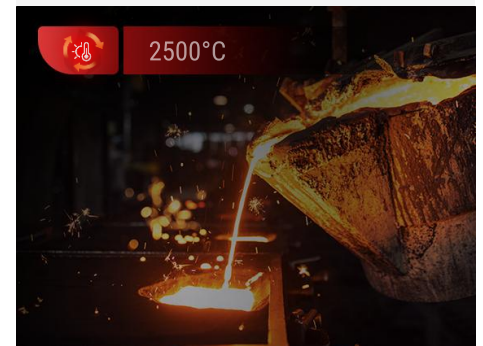
### Charges to 90% in 1 Hour

Equipped with advanced fast charging tech, it takes just 1 hour to charge the battery to 90%, significantly cutting waiting time and meeting urgent - use needs efficiently.



### Up to 2500°C Temperature Range

Up to 2500°C for metallurgy/furnace applications, preventing overheating with reliable protection.



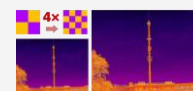
### 50Hz Frame Rate

50Hz infrared frame rate enables real-time dynamic imaging, smoothly capturing rapid temperature changes; ideal for industrial inspection and scientific analysis, ensuring precise response and data synchronization.

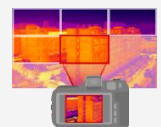


### 5 Fast Focus Modes

Supporting 5 focusing modes and a quick - focus system, it presents clearer images, saving time and enabling more precise temperature measurements.



### Super-resolution



### PerIRVision panoramic Stitching

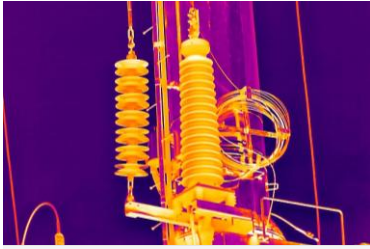


### 5.5-inch Multi-touch Screen

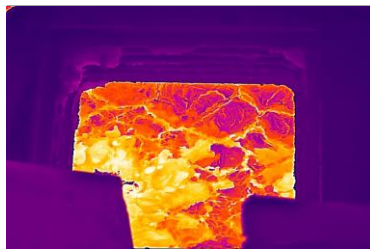


### OTA Upgrade

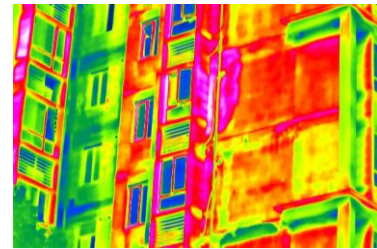
# Applications



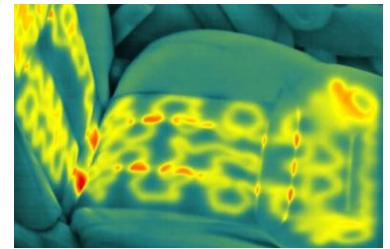
Power Industry



Industrial Inspection



Construction Industry



Scientific Analysis

## Standard Package



## ADD-ON LENSES



Standard Lens



Medium Telephoto Lens



Wide-angle Lens



Telephoto Lens



Macro Lens



TwinView DFOV Lens (Standard + Medium Telephoto)



TwinView DFOV Lens (Standard + Wide-angle)

## Specifications

Model		PT450	PT650	PT850	PT870	
Imaging and Optics	IR Resolution	480*360	640*512	1024*768	1280*1024	
	SuperIR	960*720	1280*1024	2048*1536	2560*2048	
	NETD	≤30mK		≤25mK		
	Image Frequency	50Hz/9Hz	50Hz/9Hz	50Hz/9Hz	50Hz/9Hz	
	Field of View (FOV)	45°、25°、15°、7°、3X Macro、High-temperature Lens、TwinView DFOV Lens (25°+15°、25°+45°)				
	Spatial Resolution(IFOV)	45°:1.66mrad、 25°:0.91mrad、 15°:0.55mrad、 7°:0.25mrad	45°:1.23mrad、 25°:0.68mrad、 15°:0.41mrad、 7°:0.19mrad	45°:0.77mrad、 25°:0.43mrad、 15°:0.26mrad、 7°:0.11mrad	45°:0.62mrad、 25°:0.34mrad、 15°:0.21mrad、 7°:0.09mrad	
Image Display	Digital Camera	8MP + 13MP, Autofocus		8MP + 16MP, Autofocus		
	Display	1920*1080 Resolution, 5.5" LCD Screen				
Measurement and Analysis	Object Temperature Range	-40°C to 150°C, 0°C to 650°C. Expandable: 400°C to 2500°C.		-40°C to 150°C, 0°C to 800°C. Expandable: 400°C to 2500°C.		
	Accuracy	±1°C or ±1%, whichever is greater (with temperature limitation)±2°C or ±2%, whichever is greater (others)				
General	Image and Video Formats	Radiometric JPEG, MP4 Video, Radiometric Video				
	Wi-Fi/GPS & Compass	802.11 b/g/n (2.4 GHz and 5 GHz)/Yes				
	HDMI Interface	Yes				
	Battery Operating Time	4.5H	4H	4H	3.5H	
	Battery Type& Charging Time	Fast-charging, Lithium-ion battery, Charges to 90% in 1 hour(@ 20~45°C)				

## Software



PC Software – ThermoTools  
(Windows)



Mobile App – FocusIR  
(Android/iOS)