



GUIDE

Operating with great facility

PF Series Pocket-sized Thermal Camera

Introduction

The PF Series pocket-sized thermal camera is a non-contact inspection tool for diagnosing problems and finding hidden deficiencies of electrical equipment, thanks to its 256x192 pixel infrared detector, -20°C to 550°C temperature range, 5 MP visible light camera and 3.5-inch LCD touchscreen. The extraordinary thermal imaging detail, easy operation and built-in Wi-Fi allow users to quickly and easily share the professional reports that document the problem.

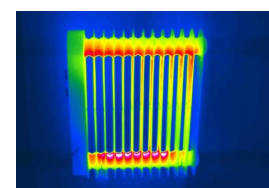
Features

- The 256x192 infrared detector produces crisp imagery
- The IR, VIS, PIP and MIF reveal temperature details
- -20°C to 550°C temperature range with auto-switching capability
- Laser ranging and intelligent area calculation of rectangle objects
- Fast image lookback and search for desired functions
- 4 hours of operation and standard Type-C for fast charging

Applications



Electrical Application



HVAC Inspection

Specifications

| Product model | PF210 |
|---------------------------------|--|
| Imaging and optics | |
| Detector type | VOx, 7.5 to 14μm |
| Infrared resolution | 256×192@12μm |
| NETD | 45mK |
| Frame rate | 25Hz/9Hz |
| Focal length | 3.2mm |
| Field of view | 56°×48° |
| IFOV | 3.75mrad |
| Min. object distance | 0.3m |
| D:S | 266:1 |
| Focusing mode | Focus-free |
| Digital zoom | 1.1x to 8x |
| Measurement and analysis | |
| Measurement range | Support auto-switching: -20°C to 150°C, 100°C to 550°C |
| Measurement accuracy | ±2°C or ±2%, whichever is greater |
| Analyzed target | Spot×2 (Include Center spot), Area×3 |
| Alarm | Full screen temperature threshold alarm (image and flash) |
| Parameter settings | Emissivity, reflected temperature, target distance |
| Others | Intelligently calculate the area |
| Image display | |
| Display screen | 3.5" LCD |
| Image mode | IR, VIS, MIF and PIP |
| Color palettes | 6: White Hot, Black Hot, Iron Red, Hot Iron, Rainbow, Arctic |
| Image adjustment | Level span mode: Automatic, Semi-automatic, Manual |
| Digital camera | 5MP |
| Functions | |
| Laser | Laser (Indication, Ranging) |
| Recording function | Photo |
| Cloud Services | Available |
| Others | Customized physical button×2 |
| Storage and transmission | |
| Storage media | Built-in (16 GB) |
| Image storage | JPG with temp info |
| External interface | USB-C, Tripod socket |
| WIFI | Yes, it can be connected to the mobile terminal for image transmission |
| Power system | |
| Battery type | Rechargeable lithium-ion battery, non-removable |
| Operating time | 4 hours |
| Charging mode | USB-C charging; PC/portable charger; Capable of charging while using |
| Charging time | 90% of full charge in 2.5 hours |
| Environmental parameters | |
| Working temperature | -10°C to 50°C |
| IP rating | IP54 |
| Drop | 1m drop test |
| Certification | CE, FCC, RoHS, KC, Anatel, IP54, 1m drop test, Damp heat test, Vibration test, Shock test, Impact test, UN38.3, MSDS |
| Physical parameters | |
| Hardware | Illuminator |
| Weight | 296g |
| Size | 138×89×34mm |
| Software kit | PC: ThermoTools; Mobile: Thermography (iOS/Android) |
| Standard | A device, Wrist strap, Carrying bag, Quick Start Guide, Power adapter, Adapter plug, USB-A to USB-C Cable, Data download card, Certificate of approval |
| Options | Tripod |